



MATERIAL EXTERIOR GRADE

MEG 1500

INSTALLATION GUIDE

MEG1500

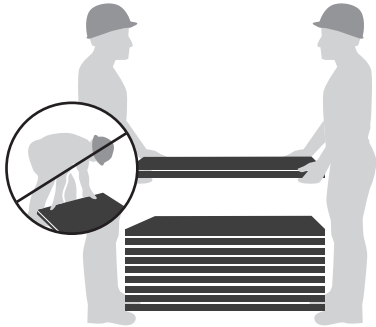
The first install-ready modular rainscreen cladding system.

Please read these installation guidelines completely and thoroughly before beginning installation.

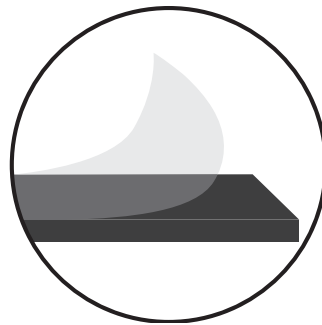
These installation instructions are for professional tradespeople and licensed contractors in the building construction industry. MEG 1500 is not intended to be used as a do-it-yourself (DIY) system for non-professionals and MEG Inc does not support the DIY market with this program. Please consult a licensed contractor for installation services.

CARE & HANDLING

Always lift panels, **DO NOT** slide or drag.



Remove protective film from both sides prior to installation.



Store material flat, under cover in a dry place.



PROFILE INSTALLATION

1 SUBWALL INSPECTION

Prior to the installation of the panels, the subwall must be inspected to assure that it is in good condition. The subwall must be plumb and true, with maximum variation from true plane no more than 1/8" in 10'. Defects must be corrected before proceeding to achieve a flat solid installation.

2 WATER RESISTANT BARRIER (Not included)

Must be air and vapor permeable.

Must be UV resistant.

Black is preferable. (WRBs tend to be visible behind joints.)

Please consult a water barrier manufacturer to ensure compatibility with this system.

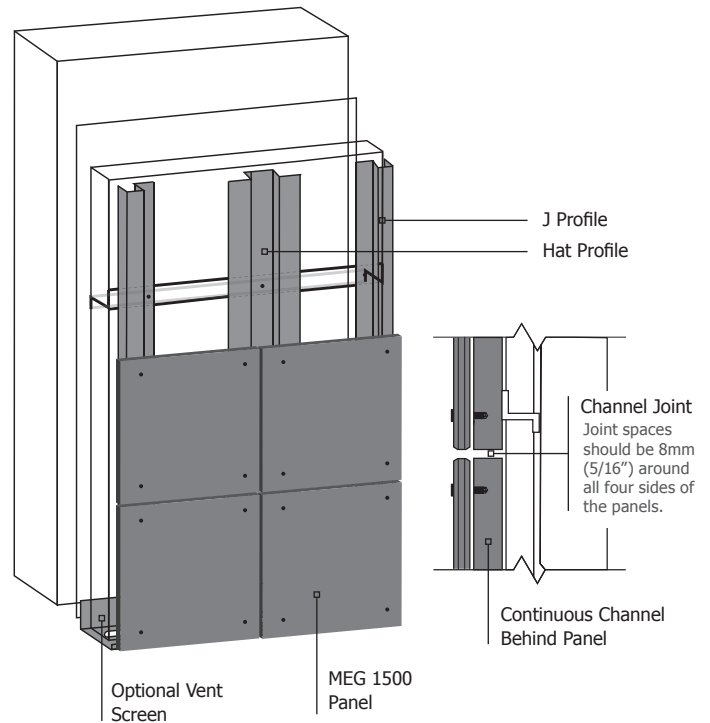
3 PROFILE INSTALLATION

Vertical profile must be secured to a structural component.
I. CMU Wall II. Frame wall

Additional furring/subframe may be required as profile spacing will differ from stud spacing.

Profiles must be continuous behind the panels.

Required breaks/joints in the profiles should coincide with the panel joints.



PANEL INSTALLATION

① PANEL PREPARATION

Inspect installed profiles and verify that they are installed plumb and level.

Confirm that the panels are in good condition and of the required sizes. Once panels are installed they are presumed the correct size and free from any visual defects or imperfections.

② PANEL INSTALL

Panels are fastened to profiles with included fasteners.

When fastening profiles, start with the fixed point and then fill in the sliding points. Never countersink a screw head, as this will interfere with the expansion of the material.

Please ensure that the panel type and arrow directions coincide with design layout.

③ FIELD MODIFICATION

Panels can be field modified using standard wood-working tools as needed for the proper installation.

All cut edges must be chamfered. Use of a router with a chamfered bit is recommended.

④ GENERAL RECOMMENDATIONS

J channels can be used at end condition as well as mid panels.

Panels should be installed no less than 6" off ground.

Do not countersink or over-tighten screws.

Install plumb and level.

Reveal should not be less than the panel thickness.

For more information, visit the MEG website at megwallpanels.com.

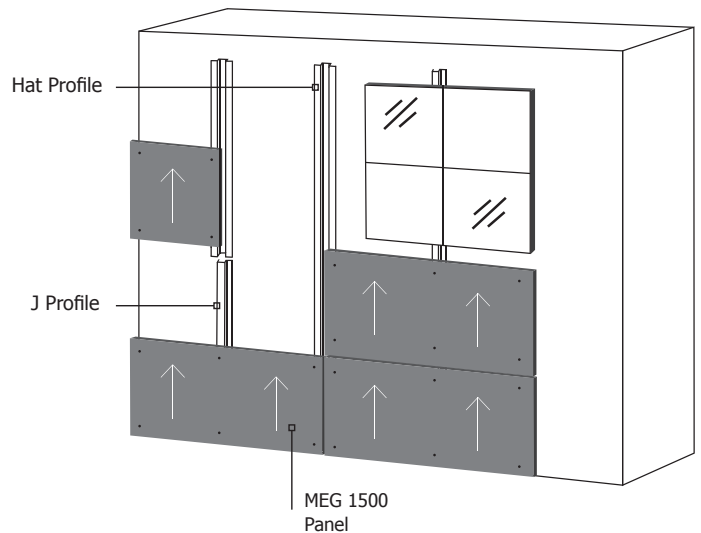
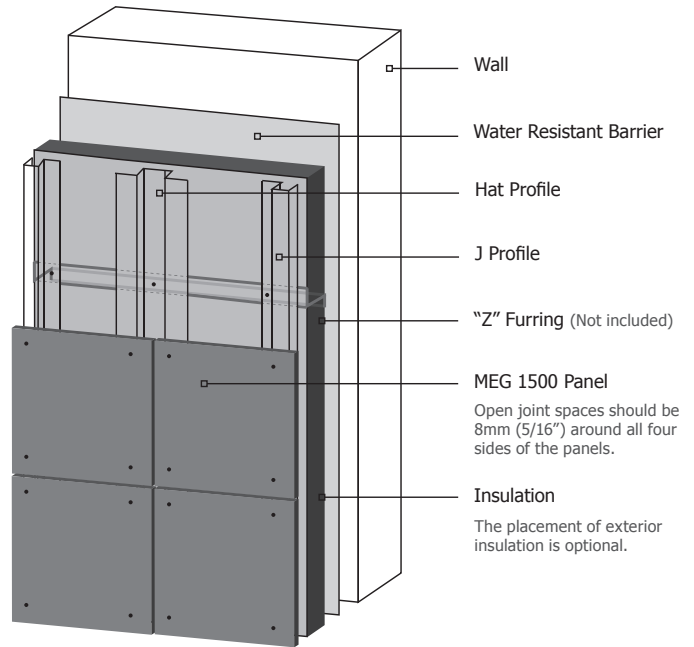
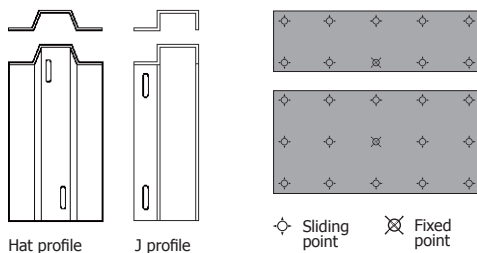


DIAGRAM SHOWING SAMPLE INSTALL PATTERN