

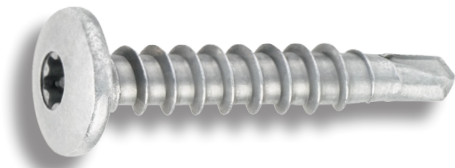
Fastener Selection Guide

AUSTENITIC STAINLESS STEEL (300 SERIES) IS REQUIRED FOR MAXIMUM BUILDING PERFORMANCE.

Abet Laminati recommends utilizing 300 series stainless steel fasteners in the attachment of its MEG exterior grade phenolic rainscreen panels. Among the commercially available stainless steel fasteners are these from SFS intec. MEG panels, fastened with SFS intec 304 series stainless steel fasteners, will withstand the test of time and meet the stringent design requirements of today's modern facilities.

SFS intec Fastener Types and Applications

SX3 TORX® A pan head bi-metal fastener made of austenitic stainless steel (304) with a carbon steel point. This fastener self-drills for the attachment of metal to metal utilized as an exposed color-matched fastener for the attachment of MEG rainscreen panels.



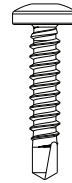
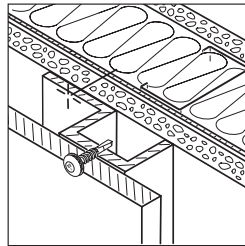
SX3 TORX®

Description	Part No.	Global Code
SX3-D10 TORX®		
#10-16 x 1" SD T20W	1193547	SX3/11-D10-4,8x25
SX3-D12 TORX®		
#12-11 x 1-3/16" SD T25	1271253	SX3/15-D12-5,5x30

Application

SX 3-D10 TORX® Self-Drill Metal to metal

Drill capacity: .039 –.118"
Thickness is based on normal, single thickness purlin/girt or multiple material thickness combined for total.



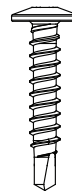
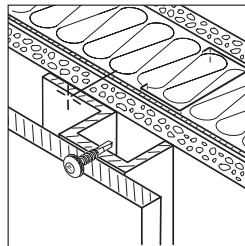
Drive	TORX® T20W
Head Dia	.404-.384"
Thread Major Dia	.189-.183"
Thread Minor Dia	.141-.135"
Strength (ult.):	
Tensile:	1960 lbs
Shear:	1456 lbs
Pull-out (ult.):	
12 ga (.105):	1189 lbs
14 ga (.075):	854 lbs
16 ga (.060):	696 lbs

Installation

Fasteners should provide for minimum of 3 fully developed threads through the metal substrate.
Tools: 0-2000 rpm screw gun equipped with depth sensing nose piece. T20W drive bit.

SX 3-D12 TORX® Self-Drill Metal to metal

Drill capacity: .060 –.118"
Thickness is based on normal, single thickness purlin/girt or multiple material thickness combined for total.



Drive	TORX® T25
Head Dia	.404-.384"
Thread Major Dia	.224-.216"
Thread Minor Dia	.163-.155"
Strength (ult.):	
Tensile:	1900 lbs
Torsional:	80 lb-in
Shear:	1620 lbs
Pull-out (ult.):	
12 ga (.105):	1715 lbs
14 ga (.075):	1032 lbs
16 ga (.060):	696 lbs

Installation

Fasteners should provide for minimum of 3 fully developed threads through the metal substrate.
Tools: 0-2000 rpm screw gun equipped with depth sensing nose piece. T25 drive bit.

Notes

Dimensions are nominal unless noted. The specific job conditions should be considered and appropriate safety factors applied when specifying the proper fasteners.



MATERIAL EXTERIOR GRADE

Abet, Inc.
60 West Sheffield Avenue
Englewood, NJ 07631
T: (855) 770-7330
www.megwallpanels.com

